

The Fytowall Journey

“CONCEPT TO DELIVERY”



The Journey that culminates on installation day is reliant on a series of processes that enable the delivery of a well-researched and considered design.

The process of designing a vertical garden starts with research. Our design Botanist selects a plant palette and develops a planting array based on the particular site conditions and client requirements.

Fytogreen balances the growing conditions with the desired aesthetic to provide Ecologically Sustainable vertical gardens.

Once the planting plan is approved we plant out the modules as per the plan of the entire vertical garden wall. Each module is numbered and identified specifically and located to a specific position within the total vertical garden wall. They are then pre grown in our green houses for 3-5 months prior to installation day.

Part of the Medibank Fytowall was pre grown in bay 2 and 3 of our green house. This 400m² wall is ready for installation on the new Medibank Building, 720 Bourke St, Docklands, Vic, 3008.

These 2 modules begin their journey to the host wall on the south east side of the building. Each module is 1m long x 500mm high and 150mm deep making them light enough for 1 person to carry.

The modules are packed carefully into a palletized system with protective sides and lids to allow stacking and transport on trucks without damaging the plants.

Meanwhile, **the host wall is prepared.** In this example the host wall is concrete. We have attached our holding hooks and applied a waterproof protective layer over the entire host wall. Each of these columns of hooks have 2 attachment points and 2 hooks hold 1 module so each module has 4 hooks holding it to the host wall. The attachment system is engineered for 90kg/m².

When the truck arrives to site we locate it as close to the host wall as possible and unpack the modules directly from the back of the truck to the access equipment. In this example a scissor lift and knuckle boom were required.

The scissor lift raises the installers and the pre grown modules to their installed location. The rows are installed like a course of bricks starting at the base and working up the building a row at a time. Each row is installed together with the integral drip line for irrigation.

Once installed the computerized, automated control system is commissioned and the plants quickly orientate themselves and enjoy the view.

Medibank Building, Docklands



Once the planting plan is approved we plant out the modules. They are then pre grown in our green houses for 3-5 months prior to installation day.



The modules are packed carefully into a palletized system.



Planted panels arrive on site



The prepared host wall. We have attached our holding hooks and applied a waterproof protective layer over the entire host wall.



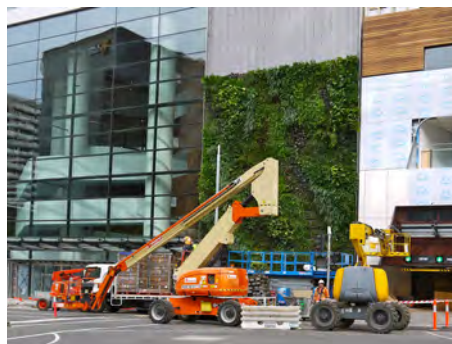
We locate the truck as close to the host wall as possible, unpack the modules directly from the back of the truck to the access equipment.



The scissor lift raises the installers and modules to position.



Installed like a course of bricks starting at the base and working up the building a row at a time. Each row is installed with the integral drip line for irrigation.



The plants quickly orientate themselves and enjoy the view.

